



DWP is the primary contact for this project and contact information is as follows:

Full Name of Company:	Dufferin Wind Power Inc.
Address:	TD Canada Trust Tower 161 Bay Street, Suite 4550 Toronto, Ontario M5J 2S1
Telephone:	Office: 416-551-6375
Website:	http://www.dufferinwindpower.ca
Prime Contact:	Jeff Hammond, Vice President
Email:	info@dufferinwindpower.ca

Dillon Consulting Limited (Dillon) is the prime consultant for the preparation of this *Water Body Report* and other REA documents. The Dillon contact information is as follows:

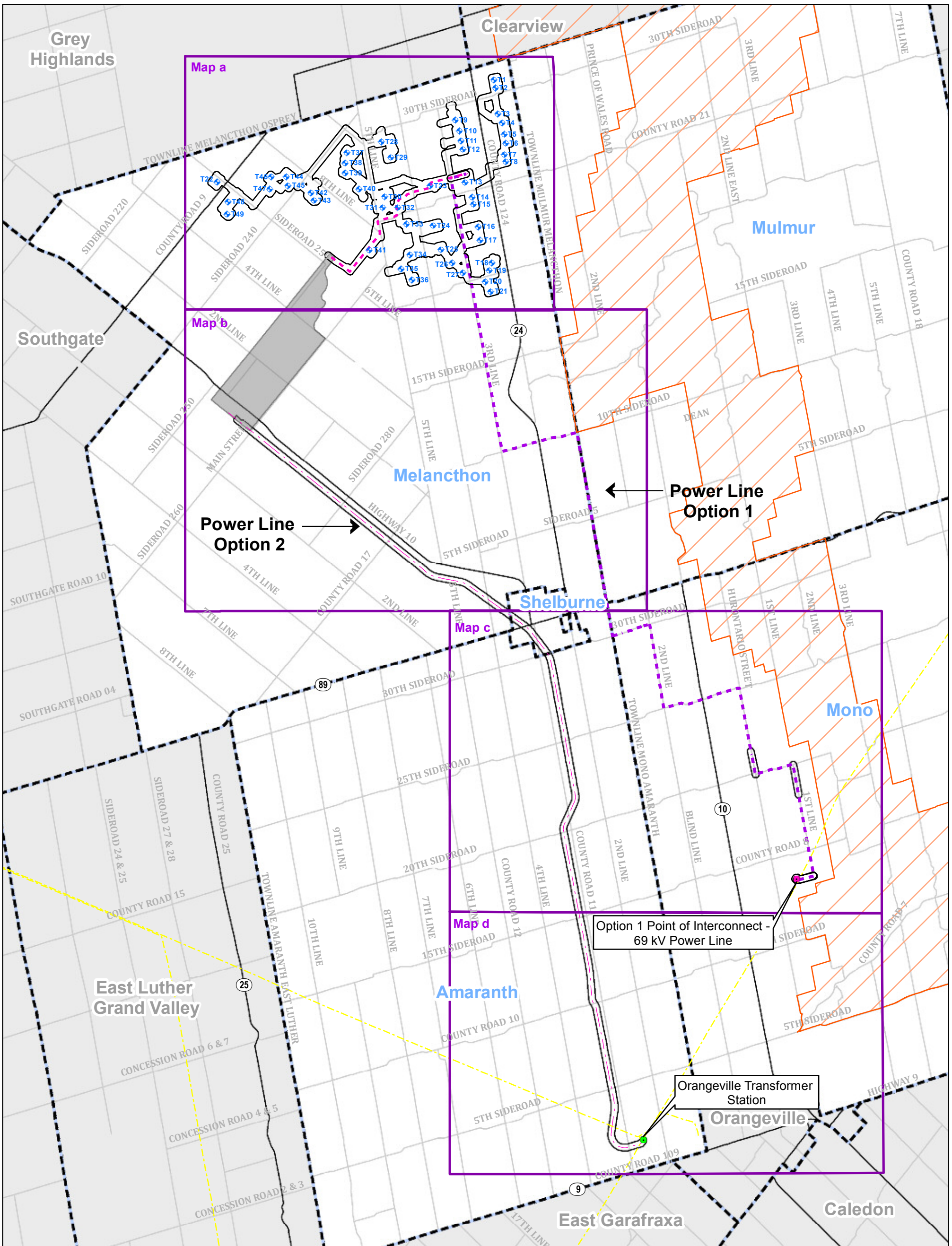
Full Name of Company:	Dillon Consulting Limited
Address:	235 Yorkland Boulevard, Suite 800, Toronto, Ontario, M2J 4Y8
Telephone:	Office: (416)-229-4647 ext 2355
Prime Contact:	Don McKinnon, REA Project Manager
Email:	dpmckinnon@dillon.ca

A toll free information line has been setup for the project to help direct questions to the appropriate parties. This toll free number is 1-855-249-1473.

3. PROJECT LOCATION

The Project is located entirely in the County of Dufferin. The wind farm itself, which includes the wind turbines and Balance of Plant (BOP) (i.e., underground collector system, project substation, access roads, operations and maintenance facility and temporary construction areas), is located within the Township of Melancthon, approximately 14 kilometres north of Shelburne, Ontario. The project area encompasses approximately 2,913 ha of privately owned land parcels. Figure 1 illustrates the project location. The location of the wind turbines is bound by:

- The Melancthon-Osprey Townline to the north
- The Melancthon-Mulmur Townline to the east
- Sideroad 15 in Melancthon to the south
- 5th Line/6th Line Northeast/Sideroad 240/County Road 2 to the west.



Dufferin Wind Power Project
Figure 1: General Location of the Project and Key Map

Legend

- ◆ Turbine Locations
- Point of Interconnect - 69 kV Power Line (Lot 14, Concession 1 - Town of Mono)
- Orangeville Transformer Station
- Road
- Highway
- Power Line Option 1 - 69 kV
- Power Line Option 2 - 230 kV
- Existing Hydro One Transmission Line
- ▭ 120 m Project Location Setback
- ▭ 230 kV Private Easement Study Area
- ▭ Niagara Escarpment Boundary
- ▭ Municipalities
- ▭ Map Extents



1:125,000

0 2 4 6 km



The wind turbines, project substation, access roads, underground collector system and operations and maintenance facility will be constructed in the Township of Melancthon on privately owned land, which is currently designated as either 'Rural', 'Agricultural' or 'Environmental Protection' on Schedule A of the Township of Melancthon's Official Plan, 2010, and the Township of Melancthon's March 2012 Draft Official Plan. The majority of the project's underground collector system will be constructed on privately owned land with the exception of road crossings and a limited number of areas within the public road right-of-way.

To connect the wind farm to the provincial grid, DWP is currently seeking approval for two power transmission options however, only one option will be constructed.

- Power Transmission Option 1 is a 36.9 kilometre, dual-circuit, 69 kV power line to connect the project substation (located at Lot 26 Concession 2, Township of Melancthon), to the point of interconnect substation (located at Part Lot 14, Concession 1 EHS, Town of Mono). The project substation will step-up the wind farm's output from 34.5 kV to 69 kV and the 69 kV power line will transfer the power to the project's interconnect substation in the Town of Mono. The point of interconnect substation will then step-up the voltage from 69 kV to 230 kV prior to connecting to an existing 230 kV Hydro One transmission line in the Town of Mono. The 69 kV power line will pass through the Townships of Melancthon, Mulmur, Amaranth and the Town of Mono, and will be located on power poles within the existing municipal road right-of-ways under a Joint Use Agreement with Hydro One.
- Power Transmission Option 2 is a dedicated, 47 kilometre, single-circuit, 230 kV power line, which would connect the project substation (located at Lot 26 Concession 2, Township of Melancthon) to the Orangeville Transformer Station (located at 7 Shannon Court, Township of Amaranth – Lot 4, Plan 131) through a switching station. The project substation will step-up the wind farm's output from 34.5 kV to 230 kV and the 230 kV transmission line will transfer the power to the Orangeville Transformer Station's 230 kV BUS. The power line will be located on a single pole line running through a private easement and along the side of a former railroad right-of-way. The former railroad right-of-way is located to the west of the project area and is owned by the County of Dufferin. The private easement and rail right-of-way passes through the Township of Melancthon, the Town of Shelburne, and the Township of Amaranth.



Alternative installation options for the 230 kV power line will be explored for multiple water body crossings associated with unevaluated wetlands. These options are based on the evaluation of 15 individual wetland units to determine their significance. If the wetland is determined to be provincially significant, directional drilling will be used to install the line. If the wetland is determined to be non-provincially significant, an overhead line will be used. These areas are outlined on Figures 2a through 2d with green highlighting corresponding with the label Directional Drilling/Overhead Lines.

Figure 2a shows the wind farm site plan. Figure 2b through 2d show the power line options.

4. PROJECT SUMMARY

A site investigation was completed according to Section 31 of Ontario Regulation 359/09. This work was preceded by a records review as per Section 30 of Ontario Regulation 359/09. A summary of the water bodies within 120 metres of the project location, detailed in the Water Assessment Report, are shown on Figures 3a through 3d and outlined in Table 1.